

FIERA REAL ESTATE - UK INVESTMENT PLATFORM

Currency
GBP

ABOUT FIERA REAL ESTATE

- > Fiera Real Estate is the dedicated UK Real Estate arm of Fiera Capital Corporation.
- > Fiera Real Estate's UK division is an FCA regulated Real Estate Manager with a 27 year+ track record.
- > The business model is vertically integrated. It combines a UK investment management platform and an operating platform through a minority ownership in 10 regional property companies.
- > Long serving senior management team with average of 15 years working together at Fiera Real Estate.

OPERATING PARTNERS

- > Fiera Real Estate owns a 33.3% shareholding in each regional property company, with the remainder owned by its senior management team.
- > This regional network provides investors into Fiera Real Estate funds with:
 - > Extensive geographic coverage
 - > Comprehensive access to deal flow
 - > Granular and local asset/project management

USD4.9 Billion
AUM globally

£740 Milion
AUM in UK

63 Assets
in UK 4.51 Sq.ft

PORTFOLIO OVERVIEW AND OPERATING PARTNERS

KEY INVESTMENT THEMES

Core income

- > Well-located assets in established commercial markets offering a good degree of liquidity;
- > Modern institutional grade buildings;
- > Well-let to strong/established tenants; and
- > Preferably market rented or under rented and therefore offering good scope for rental and income growth

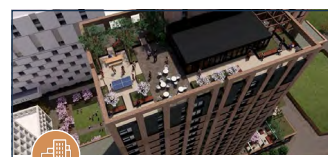
Value Add

- > **Urban logistics:** Buy land on arterial routes on edges of urban areas/ motorway junctions for 50k to 250k sq. ft. development of small to mid box industrial, delivery and logistics.
- > **Residential/BTR:** Buy unconsented land with potential for residential uses and that is either **A)** brownfield or **B)** in local planning process, or urban property/land with potential for BTR-multi family.
- > **Other urban assets:** Income producing investments with asset management angles work with corporates to asset manage their existing holdings and repurposing accommodation surplus to requirements.



LONG TERM CORE INCOME

- > Long leased industrial unit, 25 years to National Express comprising 66,099 sq ft.
- > Acquired for £5.3m



BUILT TO RENT

- > Vacant industrial site, plans to get consent for c.350 unit BTR scheme.
- > GDV £80m

AUM BY SECTOR



Retail Warehouse	31.0%
Industrial	28.3%
Office	18.6%
Residential	10.5%
Standard Retail	5.9%
Cash & Other Assets	5.7%



URBAN LOGISTICS

- > 4.9 acre site, plans to get consent for 100,000 sq ft 7-unit urban logistics scheme.
- > GDV £19m



RESIDENTIAL LAND

- > 4.8 acre site in city centre location, plans to get consent for 78 units.
- > GDV £8m

CURRENT PRODUCT OFFERINGS

CORE

Fiera Real Estate Long Income Fund (UK) "FRELIF (UK)"

Fund type	Open ended, core
Fund NAV	£193m
Target net returns p/a*	4.0%-4.5% income return
Target leverage	0%
Target life	N/A
Thematics	<ul style="list-style-type: none"> ➤ Well located assets offering long, strong and progressive income characteristics ➤ Minimum average lease duration of 15 years ➤ Under rented offering good scope for rental income growth
Equity per deal	£5m-£20m
Minimum investment	£250,000
Subscriptions or redemptions**	Quarterly

*Target returns are not guaranteed. Actual results may vary.

**Redemptions are subject to restrictions.

VALUE ADD

Fiera Real Estate Opportunity Fund V (UK) "FREOF V (UK)"

Fund type	Closed ended, value add
Target size	£150m
Target net returns*	12%-15% net IRR
Target leverage	20%-30% at portfolio level
Target life	Maximum 6 years from first close
Thematics	<ul style="list-style-type: none"> ➤ Rezoning land to residential use ➤ Construction of pre-sold purpose build to rent accommodation ➤ Development of last mile logistics & industrial units ➤ Development of technologically enabled, flexible urban assets ➤ Asset management of undermanaged and/or undercapitalised assets
Equity per deal	£3m-£25m
Minimum investment	£5m per investor group
Subscriptions	Quarterly (within investment window)

UK CORE OR VALUE ADD SEGREGATED ACCOUNT OPPORTUNITIES

Fiera Real Estate also offer a segregated account opportunity in both the core and value add space if the above funds do not fit your investment criteria. These opportunities can be tailored to your investment needs. We are targeting a minimum mandate size of c.£30m for these potential UK vehicles following the thematics for each strategy set out above.

WHY CHOOSE FIERA REAL ESTATE

- ⊙
Widespread UK geographic coverage:
 Offering extensive access to deal flow, and granular asset management capability via minority ownership in 10 regional operating partners.
- ⊙
25 year+ track record:
 Demonstrated investment model with access to global and local market intelligence.
- ⊙
Alignment:
 Co-investment alongside clients at every level ensuring that interests are aligned.
- ⊙
Rigorous approach to risk & return:
 Strong pursuit of investment performance by actively managing assets and relationships.
- ⊙
Strong focus on ESG:
 All assets owned or being developed are technologically and climate change resilient.

CONTACT DETAILS



Emma Murray
 Business Development Director, UK

Queensberry House
 3 Old Burlington Street
 London, W1S 3AE

+44 746 915 8805
Emma.Murray@fierarealestate.com



Charles Allen
 Head of Transactions, UK

Queensberry House
 3 Old Burlington Street
 London, W1S 3AE

+44 780 960 7378
Charles.Allen@fierarealestate.com

DISCLAIMER

This document is for information purposes only and does not constitute an offering of any security, product, service or fund, including interests in the intended the vehicle; recipients should consult their respective advisors regarding such matters. This document may not be used in making any investment decision. This document contains only summary information and no representation or warranty, express or implied, is or will be made in relation to the accuracy or completeness of the information contained, by Fiera Real Estate (UK) Limited.

("Fiera Real Estate") (the "Manager"), the manager of the vehicle. This document is not a prospectus nor information memorandum. The Manager has prepared a confidential information memorandum with respect to the vehicle (the "Memorandum"). Any offer relating to the securities described herein, if made, will be made, and any investor should make its investment, solely on the basis of information that will be contained in the Memorandum, the vehicle's limited partnership agreement and the subscription agreement providing for subscription for units of the vehicle (the "Offering Documents"). Should any of the descriptions or terms in this document be inconsistent with the Offering Documents, the Offering Documents shall prevail. The document does not constitute an offer to sell, or a solicitation of an offer to buy, a limited partnership interest in any jurisdiction. The distribution of this document and any other document relating to the distribution or marketing of the vehicle, is made and will be made only to qualified purchasers (as defined in National Instrument 45-106 – Prospectus Exemptions) or pursuant to another applicable prospectus exemptions.

Nothing contained herein may be relied upon as a guarantee, promise, assurance or a representation as to the future. No assurance can be given that the investment objectives of a Fund will be achieved or that investors will receive a return on investment ("ROI") or not incur losses. You are cautioned not to put undue reliance on any of the assumptions, scenarios, projections, IRRs, ROIs or other information contained in the materials.

This document is confidential and is being provided to you on the express understanding that it will not be reproduced or transmitted by you to third parties without Fiera Real Estate prior written consent. If you are not the intended recipient of this document, you are hereby notified that the use, circulation, quoting, or reproducing of this document is strictly prohibited and may be unlawful. Additional information is available upon request.

Any opinions expressed in this presentation may be subject to change without notice. Although statements of fact and data contained in this presentation have been obtained from, and are based upon, sources that Fiera Real Estate believes to be reliable, Fiera Real Estate does not guarantee their accuracy, and any such information may be incomplete or condensed. No representation is made that the information contained herein is accurate or complete, and it may not be relied upon as such.

The information provided is proprietary to Fiera Real Estate and it reflects Fiera Real Estate's views as of the date of this document. Such views are subject to change at any point without notice. Some of the information provided herein is from third party sources and/or compiled internally based on internal and/or external sources and are believed to be reliable at the time of production but such information is not guaranteed for accuracy or completeness and was not independently verified. Fiera Real Estate is not responsible for any errors arising in connection with the preparation of the data provided herein. No representation, warranty, or undertaking, express or implied, is given as to the accuracy or completeness of such information by Fiera Real Estate or any other person; no reliance may be placed for any purpose on such information; and no liability is accepted by any person for the accuracy and completeness of any such information. This document does not constitute legal, tax, accounting or investment advice; prospective investors should consult their respective advisors regarding such matters.

Target returns for Fiera Real Estate Long Income Fund are predicated on a core-core plus acquisition strategy as determined by the Investment guidelines for the fund. Whilst these are target returns there is no guarantee that such returns will be achieved during all stages of the market cycle as capital values can fall as well as rise. Both market movement and asset specific factors can influence returns including tenant insolvency resulting in a loss of income or other property specific risks. The Fund is managed within a risk controlled framework with a high level of corporate and operational governance so as to mitigate these risks.

Target returns for Fiera Real Estate Opportunity Fund V (UK) are based on the investor return net of promote, management fees and running costs, and is calculated on the investor drawdowns and distributions between the UT and LP.

Any risks associated are:

The Funds are not registered under the Securities Act of 1933, as amended, or the Investment Company Act of 1940, as amended.

Any investment in the Interests is speculative, is not suitable for all investors and is intended for experienced and sophisticated investors who are willing to bear the high economic risk of the investment, which may include, among other risks:

- loss of all or a substantial portion of the investment in the Interests due to leveraging and other speculative investment practices;
 - lack of liquidity in that there is no secondary market for the Interests and none is expected to develop;
 - volatility of returns;
 - restrictions on redemption and transferring interests;
 - potential lack of diversification and resulting higher risk due to concentration of the Portfolio Investments by industry;
 - absence of information regarding valuations and pricing on the Interests and the Portfolio Investments; and
 - less regulation and higher fees than mutual funds.
- consider consulting your tax adviser and counsel regarding an investment in the Fund.
- please refer to the Fund's offering documents for a more complete description of potential risks and conflicts of interest.

Past performance of the General Partner or the Manager is not indicative of future performance.